

City of Keizer Service Areas

- Services Areas**
- PGE
 - Salem Electric
 - Loren's Sanitation
 - Valley Recycling & Disposal

- Grid**
- Keizer Fire and Rescue, G4
 - Keizer Police Office, G4
 - Parcels
 - Keizer City Limits
 - Salem City Limits
 - Marion County
 - Polk County

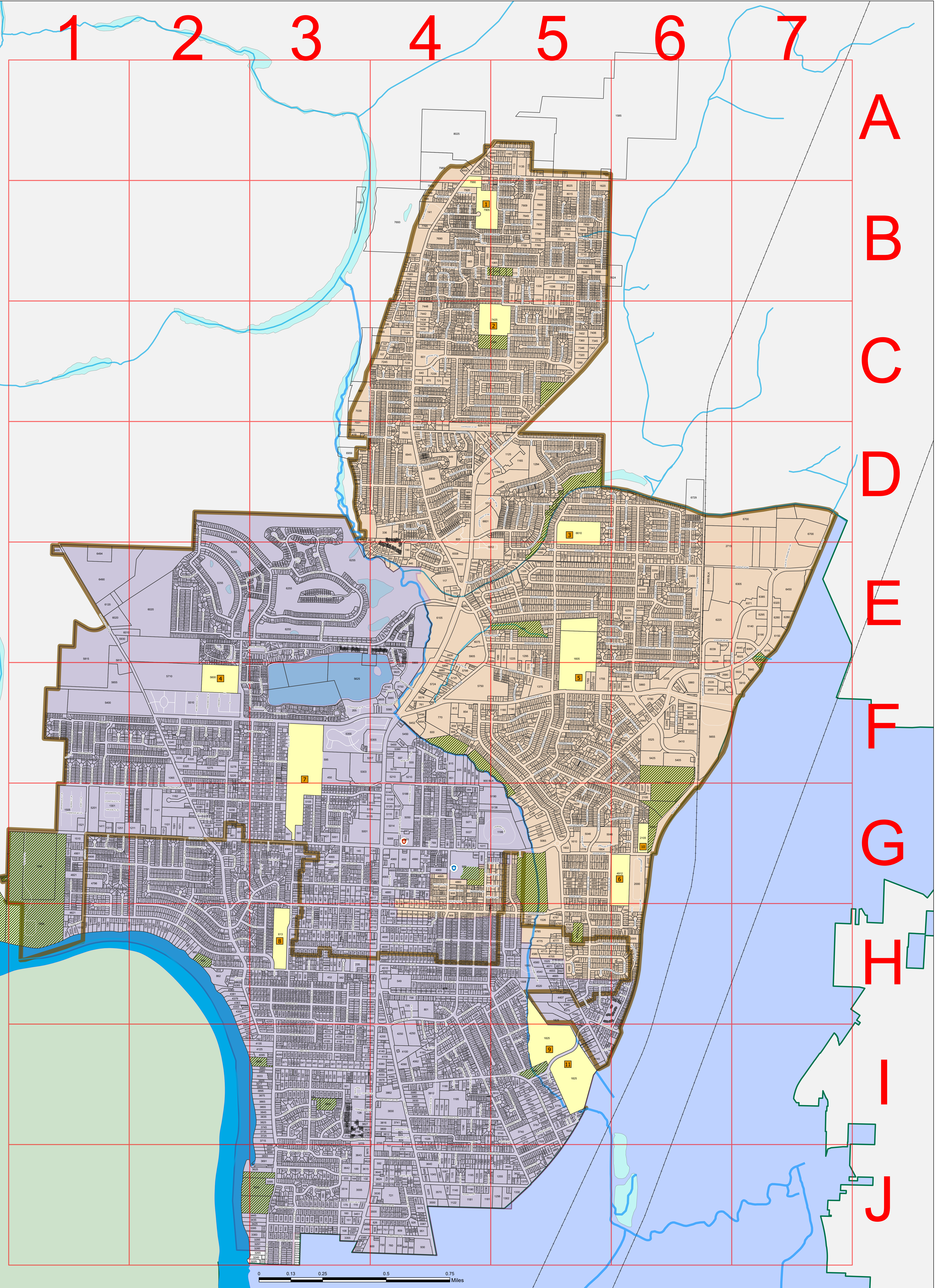
- School**
- Forest Ridge Elementary School
 - Clear Lake Elementary School
 - Gubser Elementary School
 - Keizer Elementary School
 - Whitaker Middle School
 - Kennedy Elementary School
 - McNary High School
 - Cummings Elementary School
 - Weddle Elementary School
 - Crosshill Christian School
 - Claggett Creek Middle School
 - School Parcel



Version Date: March 2022

The City of Keizer is not liable for incomplete or amended data. Data and analysis presented within project are based on best available information, and are expected to be updated on a regular basis. Layers reflect documented resources at the time of data aggregation, and as such, absence of documentation does not necessarily indicate that no data are present. Some data layers may be summarized to preserve the confidentiality of sensitive information. The City of Keizer maintains no responsibility from misuses of the data or the application. This product is provided as is, without warranty. In no event is the City of Keizer liable for damages from the use of this product. This product is subject to license and copyright limitations. Distribution, sale and/or resale is prohibited.

I have read this disclaimer and understand the intent of this system, and therefore fully release the City of Keizer from any liability arising from or related to using the project.



Streets, 2022

Grid

157 CT NE, G4	ALLIANCE WAY NE, G5-G6	BOLF TR, D4	CEDAR BLUFF CT NE, G4	CRISTWOOD CT NE, F5	DWAN CT NE, F2	GANDER WAY NE, G2	HORIZON CT NE, H4	KAPPA DR NE, F5	LANCERS CT NE, F5-F6	MARBLE LN NE, H3	MENDEA CT NE, H3-H4	PANTHER CT NE, H5	PROVIDENCE BL, G2	SALLEN PLY NE, J5	ST CHARLES ST NE, A4, B5	TRACY ST NE, G4, H6	WHITWORTH DR NE, E3
157 CT NE, G4	ALLIANCE WAY NE, G5-G6	BOLF TR, D4	CEDAR BLUFF CT NE, G4	CRISTWOOD CT NE, F5	DWAN CT NE, F2	GANDER WAY NE, G2	HORIZON CT NE, H4	KAPPA DR NE, F5	LANCERS CT NE, F5-F6	MARBLE LN NE, H3	MENDEA CT NE, H3-H4	PANTHER CT NE, H5	PROVIDENCE BL, G2	SALLEN PLY NE, J5	ST CHARLES ST NE, A4, B5	TRACY ST NE, G4, H6	WHITWORTH DR NE, E3

157 CT NE, G4	157 CT NE, G4	157 CT NE, G4	157 CT NE, G4	157 CT NE, G4	157 CT NE, G4	157 CT NE, G4	157 CT NE, G4	157 CT NE, G4	157 CT NE, G4	157 CT NE, G4	157 CT NE, G4	157 CT NE, G4	157 CT NE, G4	157 CT NE, G4	157 CT NE, G4	157 CT NE, G4	157 CT NE, G4
---------------	---------------	---------------	---------------	---------------	---------------	---------------	---------------	---------------	---------------	---------------	---------------	---------------	---------------	---------------	---------------	---------------	---------------

